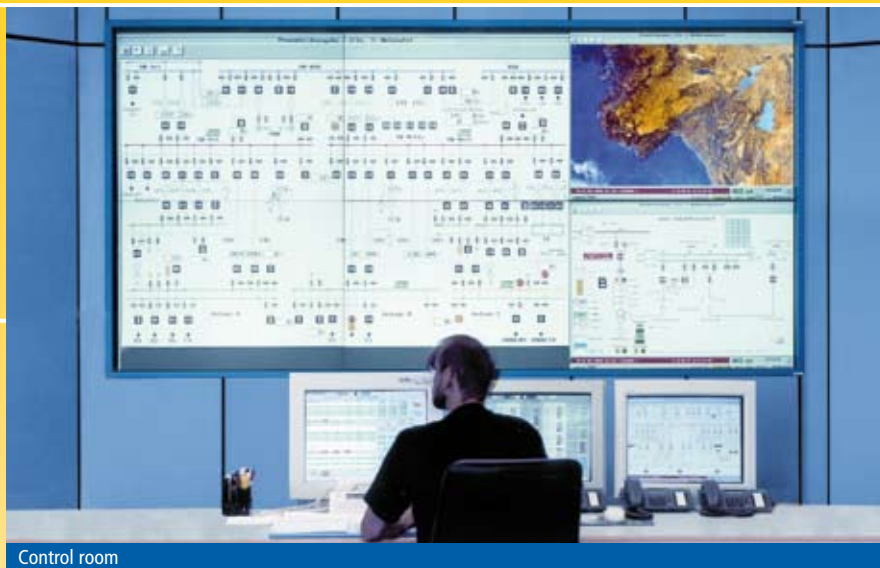


ProguideCommander – the new Dieffenbacher plant control concept

During the last 10 years the control rooms of wood based panel plants featured up to 20 monitors with distributed control systems. The operator never saw a complete overview of the process, but had to constantly switch screens.

Dieffenbacher now introduces a completely different and innovative approach for the HMI (process visualization). ProguideCommander enables a comprehensive survey with one big screen and any process section of the entire plant can be controlled from only 3 monitors.



Control room

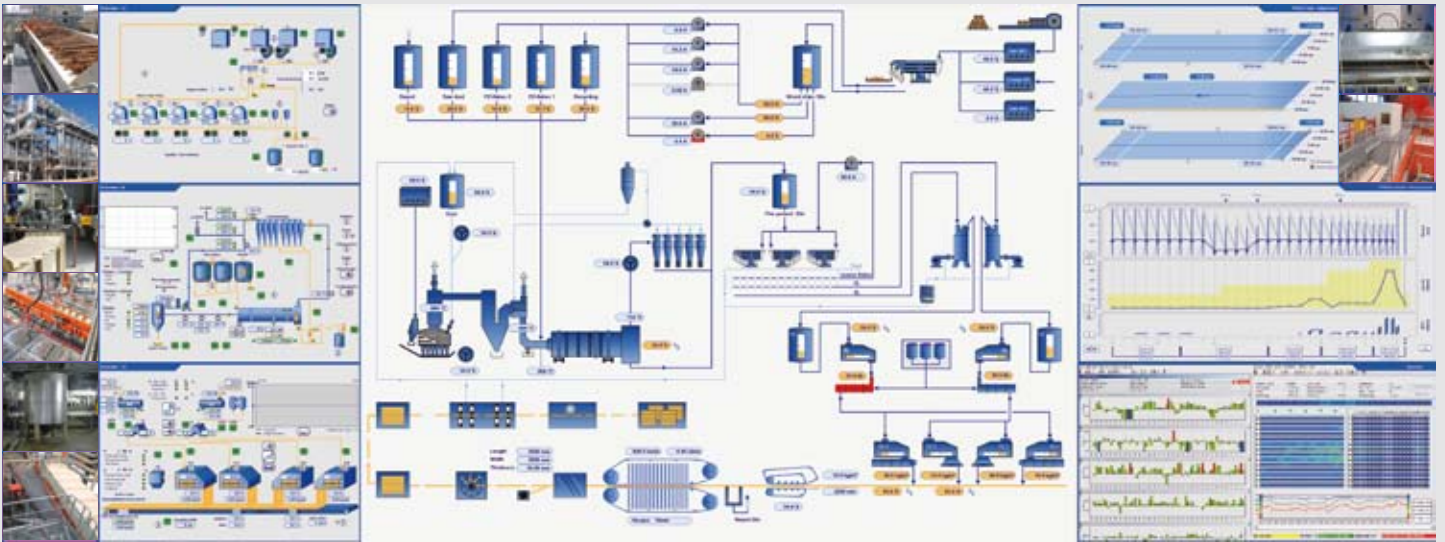
Features:

- Comprehensive survey of the complete process
- Better and faster control reduces cost
- Flexible, situation dependent use of the control room screen
- Configurable control modes, such as operation, maintenance, process optimization, offset or hazardous conditions
- Online configuration of trending
- Object based alarm message filters
- Reduced space requirement for control room

DIEFFENBACHER

ProguideCommander – the entire process on one screen

DIEFFENBACHER



ProguideCommander

Better control reduces the cost

One big screen integrates video signals and the controls of all quality related information. This not only requires a much smaller control room, but also provides free configuration of all screens. Standard control modes for operation, maintenance, process optimization and hazardous conditions are available.

ProguideCommander automatically filters out non essential information and provides the operator with a much better overview of the plant conditions, which results in faster and better reactions.

... please contact us for further information

DIEFFENBACHER GMBH + CO. KG
Heilbronner Strasse 20
75031 Eppingen, Germany
Tel.: +49 (0) 7262 65 - 0
Fax.: +49 (0) 7262 65 - 377
E-Mail: dse@dieffenbacher.de

www.dieffenbacher.com